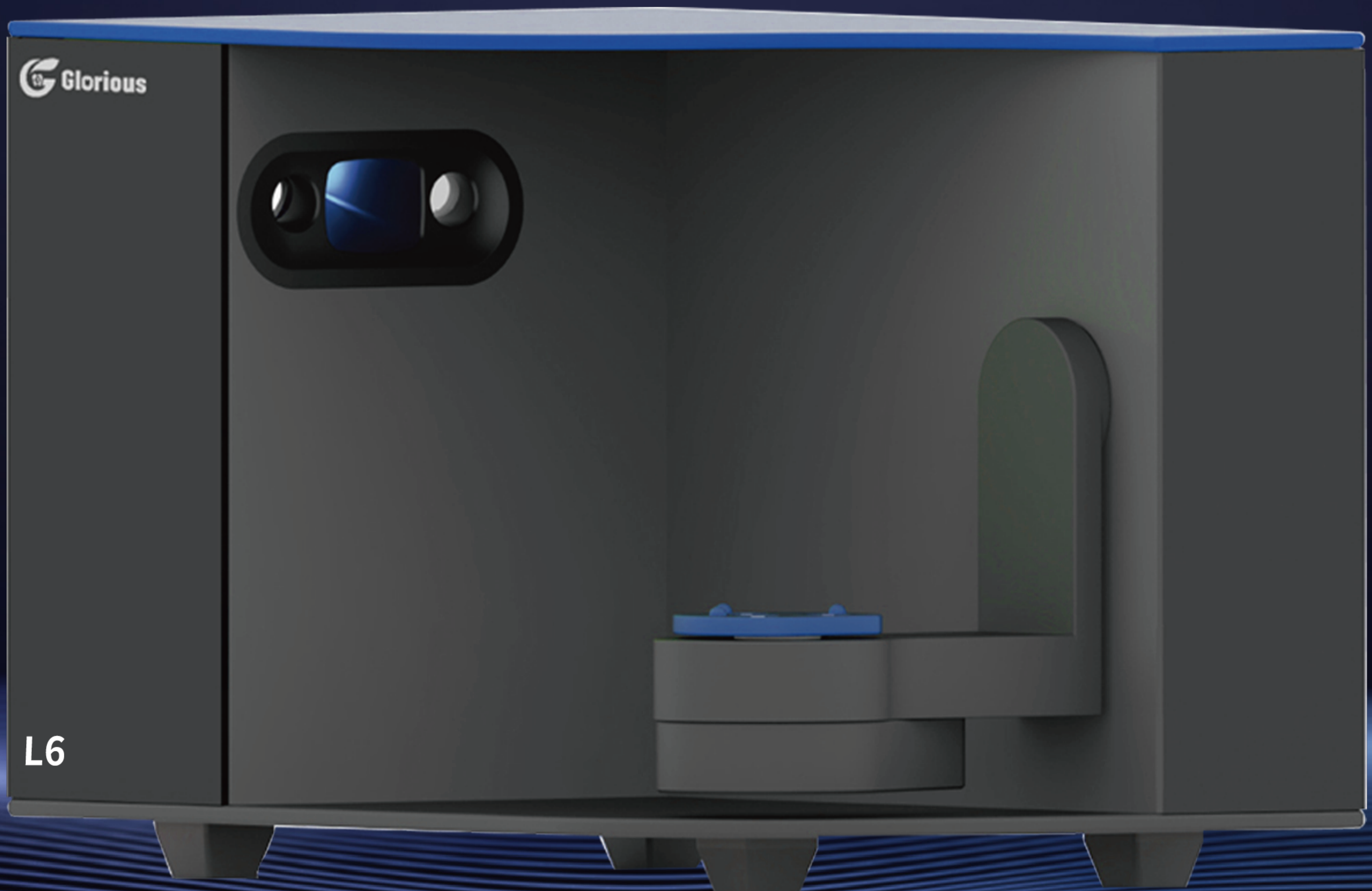


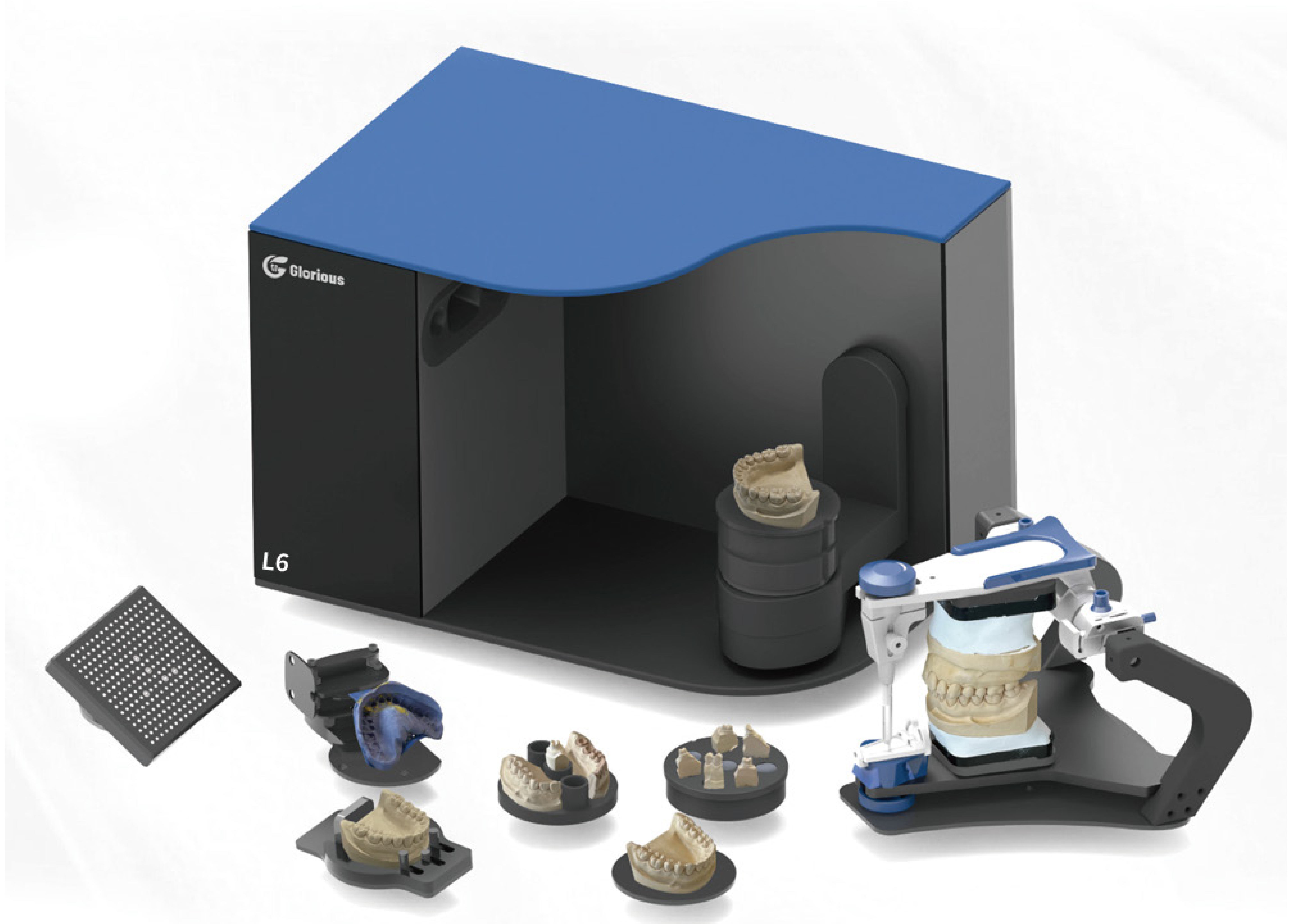
3D Scanner

L6- The Value Choice for Dental Digitalization
L series of 3D scanners for dental technicians

Dental digital comprehensive solution provider



The L6 scanner adopts an all-metal body design. Under the double blessing of unique mechanical structure and powerful intelligent algorithm, it brings industrial-level scanning accuracy, intuitive and convenient software operation, and satisfies all kinds of complex scanning. Scanning efficiency helps the digital upgrade of the dental industry.



High Detail

The high-pixel industrial camera brings fine scan data, and the details of the model are more prominent.

High scanning efficiency

Support multi-piece positive and negative scanning, improve scanning efficiency and ensure more comprehensive jewelry data.

Easy to operate

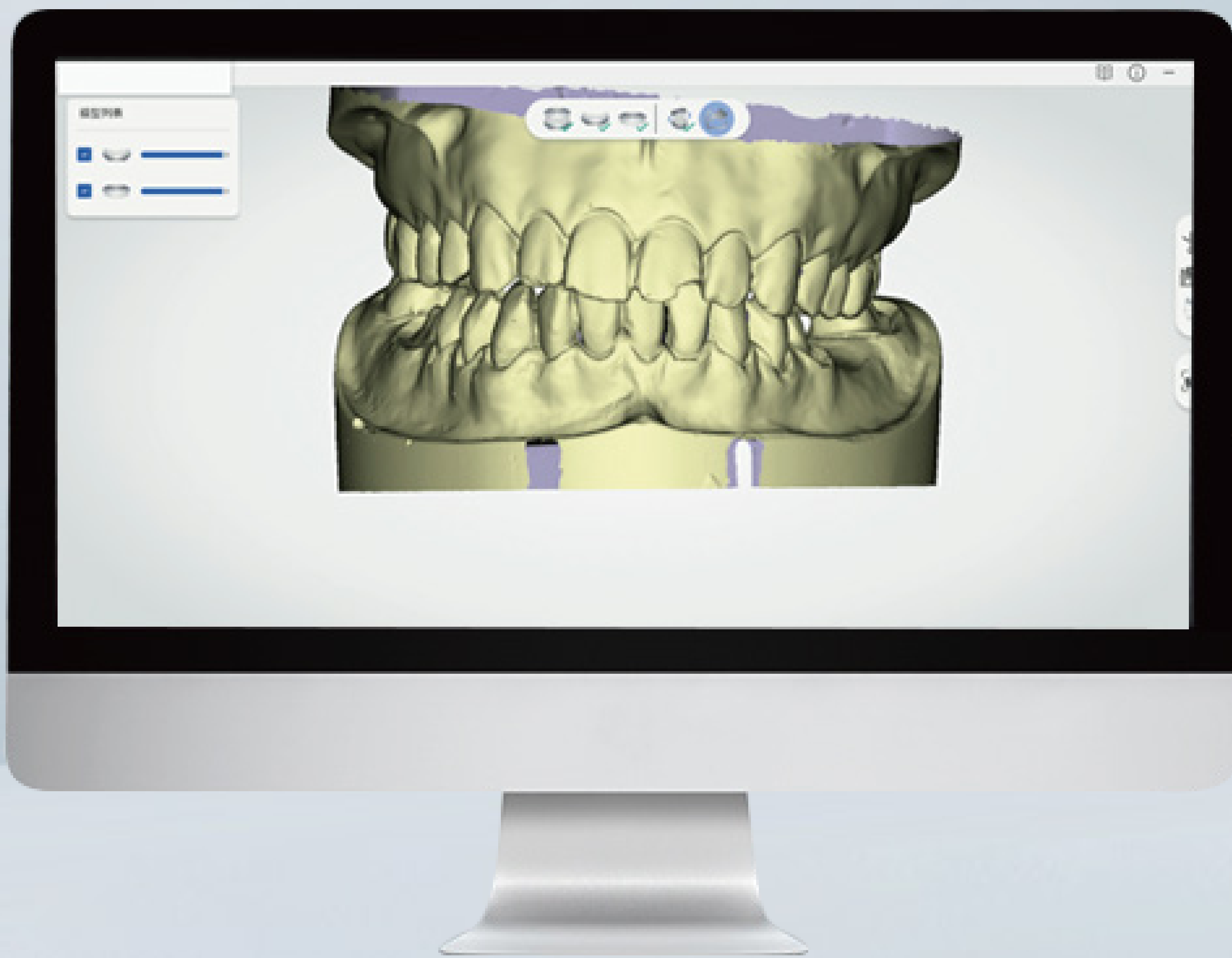
Intuitive user interface and guided operation mode, you can quickly master the use of the software, and the operation is simple and convenient.

Open and compatible

The software supports the export of multiple data formats, supports point cloud output, and is compatible with mainstream design software.

The order is comprehensive and the operation is flexible

The new software interface covers various reuse tools, simple operation, convenient, process can be freely switched, and scanning is more flexible



The order type includes dental repair, orthodontics, and porous disk mode, which comprehensively covers various scenarios.



True Color Scan



Product model Glorious L6	Camera resolution 2*3.0MP	Spatial pitch 0.05
Interface USB 3.0	Light source Blue light	Power supply DC24V
Equipment weight 9kg	Scanning area 95*90*60	Equipment size 393mm*271mm*274mm
Data output format STL、 PLY、 OBJ	Scanning principle Structured light 3D scanning	